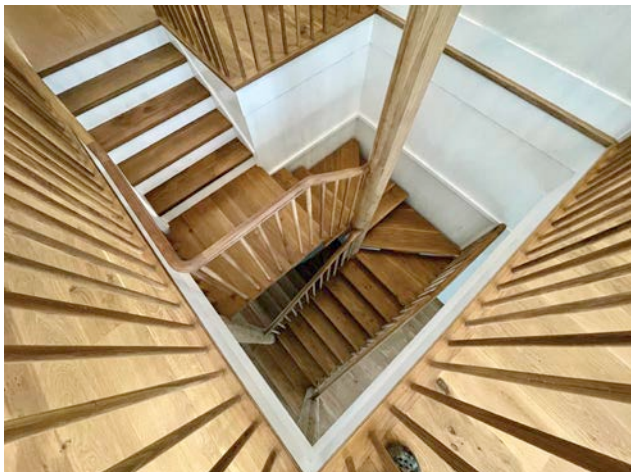


Project profile...



Central Coast Stunner.

Skandi Flooring recently completed the floor installation and finishing for this stunning new home on the NSW central coast.


The home is in a picturesque seaside coastal village north of Sydney that features many stunning architect-designed homes, and this exquisite waterfront home is one of them. Over 250m² of solid French Oak flooring was installed and finished for the project by Skandi Flooring. Anders Hagberg from Skandi worked closely with the builders (Construct Central Coast) and the homeowners to achieve the natural, low sheen look they were after, with the requirement that the floor coatings needed to be extremely durable, and be non-toxic water-based.

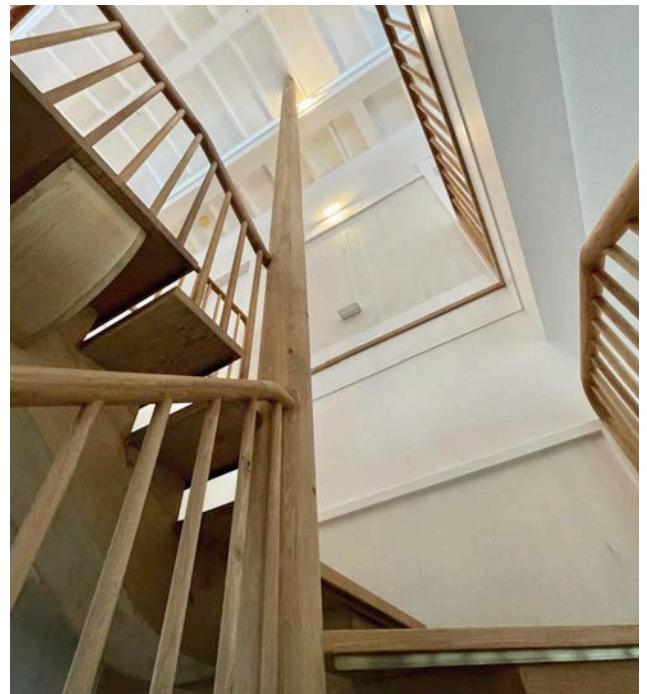
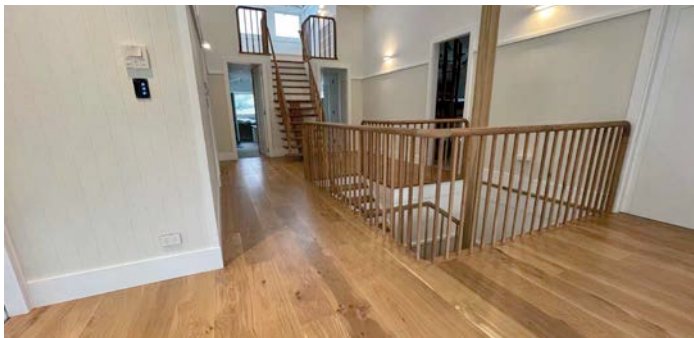
Bona finishes were selected to fill this brief and used throughout the timber floors of the home, which are spread over three levels. The home features extensive timber joinery throughout, with impressive oak staircases and balustrades matching the solid oak flooring. A key design feature of the home are the vaulted ceilings that maximise the natural light and create an open airy effect, enhancing the light sheen of the oak.


Once the solid French Oak floors were installed, one coat Bona Craft Oil 2K invisible was applied as a first coat, followed by three top coats of Bona Traffic HD Extra Matt. Traffic HD AntiSlip was used on the treads, and Bona Craft Oil 2K also proved an ideal finish for the handcrafted balustrades. Anders made comment that the Craft Oil 2k invisible was great for adding depth and clarity to the grain of the French Oak. The central staircase of this stunning residence is a hero feature, and extends up to a third level mezzanine with expansive ocean views.

The project was intricate and highly detailed, and being such an extensive build there were up to 30 tradesmen on the site at any one time. This required flexibility and a multi-stage approach to complete the project over an extended period.

The clients couldn't be happier with the end result and can now look forward to years of enjoying their beautiful natural timber flooring in this stunning seaside retreat.

Contractors: Skandi Flooring NSW
Builders: Construct Central Coast 





NORTON MESH POWER
SAINT-GOBAIN

**NEW POWERFUL
CERAMIC GRAIN**

[f NortonPacific](#)
[y NortonAbrasives](#)
[i NortonAbrasivesPacific](#)

© Saint-Gobain 2019
Norton, "Reshaping Your World" and Mesh Power are registered trademarks of Saint-Gobain Abrasives.
Call 1300 007 650 or visit SAINT-GOBAIN.COM.AU

